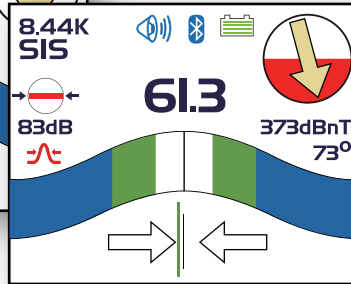
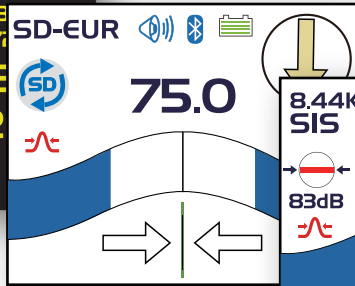
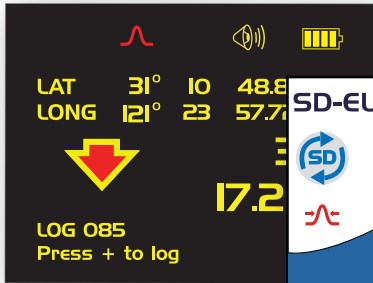




VIVAX

METROTECH

# vLoc-5000



Utility Locating System

Signal Select

Signal Direction

Distortion Alert

Data Utilization

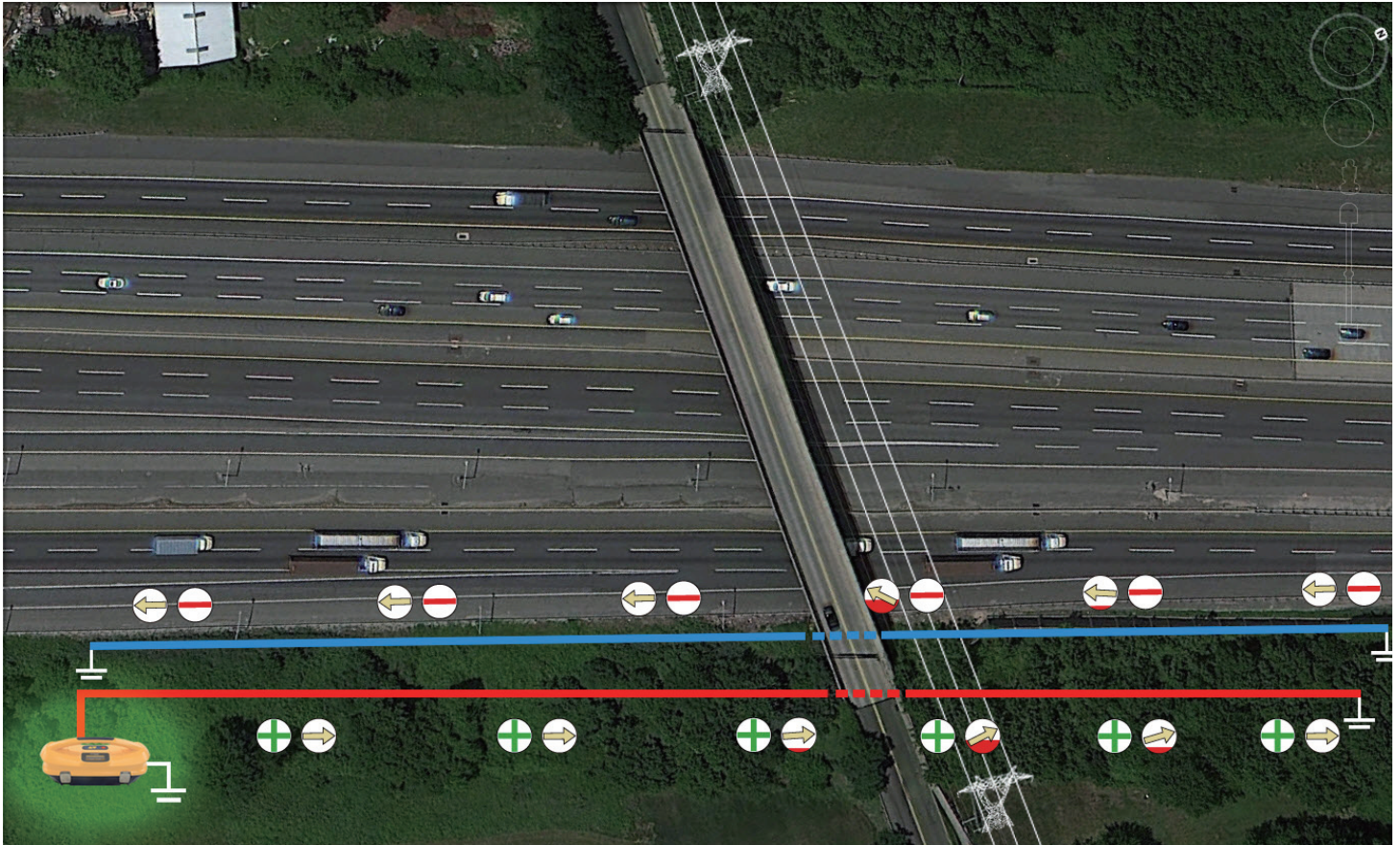
Data Management

Internal Data Logging

Internal GPS



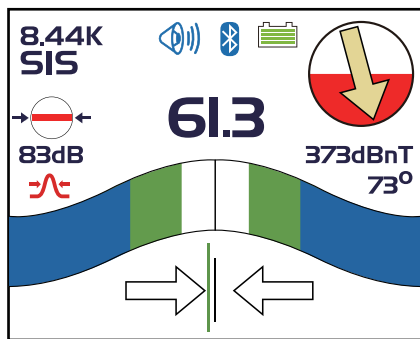
The vLoc-5000 - Boost your confidence while locating and pin-pointing buried pipes and cables. Vivax-Metrotech introduces the vLoc-5000 with its state of the art algorithm to provide sophisticated and intuitive user interface. The information is fast and easy to understand, it makes the locate process easier and faster. The vLoc-5000 can store the locate information in its internal data logger and GPS. The receiver comes standard with a Lithium-Ion rechargeable battery pack which eliminates the need to constantly purchase batteries.



## Accuracy

### vLoc-5000 Receiver is Intuitive and Easy-To-Use

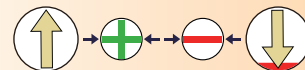
The vLoc-5000 combines Signal Select, Signal Direction and Distortion Alert in one locator. All information including GPS coordinates can be stored internally and retrieved later using My Locator2.



The vLoc-5000 offers the Guidance Compass™ that combines features below to aid Positive Line ID.

### Signal Select™

Aids positive utility identification and aids in the notification of "ghost" signal's as return currents.



### Distortion Alert™

Immediately warns operator of magnetic field distortion from hidden utilities.



## The Loc-10TxSIS

### Powerfully Efficient Performance


Loc-10TxSIS combines Signal Select (SiS) and Signal Direction (SD) features to give you the best combination for positive identification. The transmitter measures line parameters in absolute physical units (volts, ohms, amps), to give critical Insights into the quality of a complete line circuit. Essential information is easily visible on the transmitter's display screen. Other enhancements include high capacity Ni-MH rechargeable battery technology that lowers operating costs.

- ▶ Broad range of active frequencies between 16Hz and 200 kHz are supported for direct mode locating
- ▶ Up to 2 frequencies may be activated simultaneously to select the best signal frequency for the locate situation
- ▶ Constant current, selectable in steps up to a maximum 1A
- ▶ Multiple inductive frequencies from 8 kHz up to 200 kHz
- ▶ Auto impedance matching optimizes the output efficiency

- ▶ Optional A-frame mode for sheath fault locating.
- ▶ Auto protection to 250V AC against live power connection to the transmitter.

## Features

### Receiver and Transmitter

- ▶ Signal Select™ and Signal Direction offer Positive Line ID 
- ▶ Distortion Alert™ assists in recognizing signal bleed-over
- ▶ Peak Response, Null Response, L/R needle
- ▶ Bluetooth® wireless communication enabled in receiver
- ▶ Bright color graphical display
- ▶ Broad frequency selection between 16Hz and 200 kHz



## Data Utilization

### Improved Wireless Data Communication

With Bluetooth® wireless communication technology built-in, the receiver can pair with other Bluetooth-enabled devices for short-range communication.

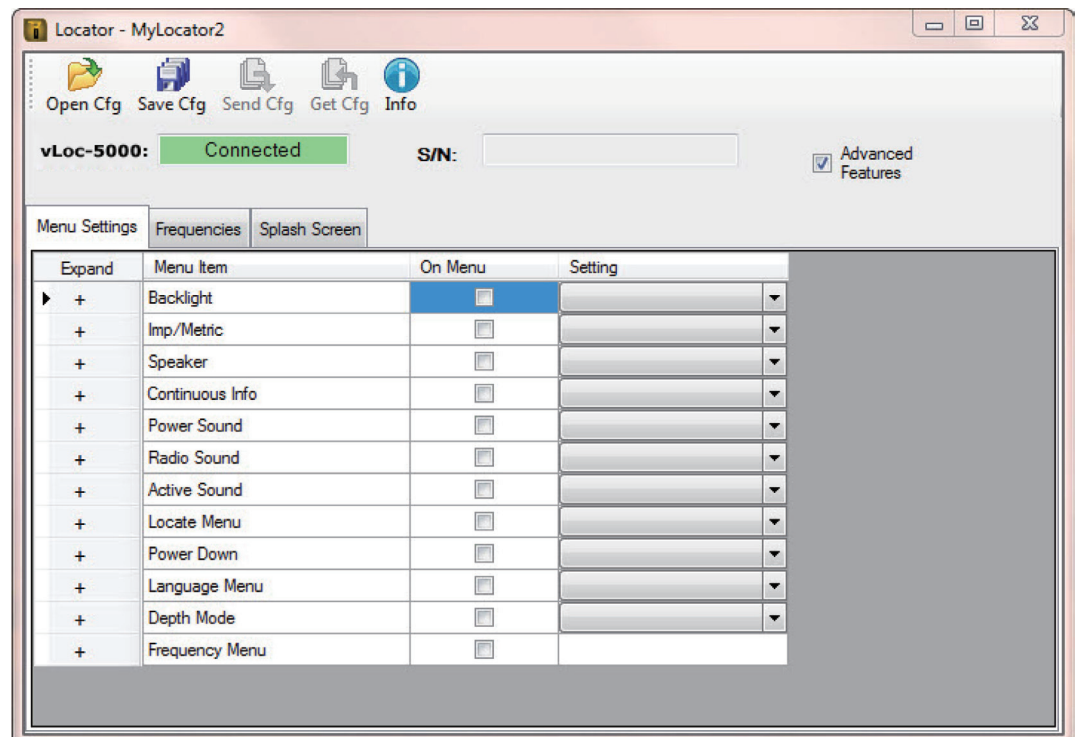
### Global Positioning System (GPS)

The internal GPS and data logging records a site location reference and combines it with all the other information available:

- ▶ Date & Time
- ▶ GPS Co-ordinates
- ▶ Frequency used
- ▶ Depth & Current
- ▶ Signal Select
- ▶ Signal Direction
- ▶ Distortion
- ▶ Mode of operation

### MyLocator2

MyLocator2 configuration tool is a software package that enables the operator to configure and update the vLoc-5000 locators. MyLocator2 is also used to transfer data logs from the locator to a host computer.



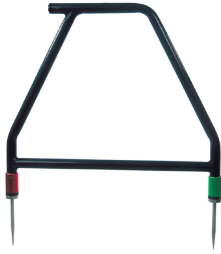




## Receiver Accessories (specify model of receiver when ordering accessories)

### A-frame

For detecting the position of ground/sheath fault.



### Charging Lead (12V DC)

12ft (4m) long lead to charge the receiver battery in a vehicle.



### Signal Stethoscope

Used for cable identification.



### Bluetooth

Enables Bluetooth connectivity to other Bluetooth devices such as GPS antennas. The Bluetooth module can be retrofitted to vLoc series 2 receivers by the user.



### GPS

Vivax-Metrotech Bluetooth is compatible with many other GPS units including high accuracy GPS.



10ft (3m) accuracy



3ft (1m) accuracy

### Rechargeable Battery and Charger

Lithium-Ion rechargeable battery pack and charger



## Transmitter Accessories (specify model of transmitter when ordering accessories)

### VM-Clamps

To apply the transmitter signal to a target cable when no access to the conductor is possible. Dia. 2" (50mm), dia. 4" (100mm), dia. 5" (125mm), 18" flexible (450mm), signal select clamp dia. 4" (100mm)



### LPC Separation Filter

To apply the transmitter signal to cables carrying up to 240V AC.



### Loc-10Tx - Power Lead (12V DC)

30ft (10m) lead to power the transmitter from a vehicle.



### Rechargeable Battery Packs and Chargers

Loc-10Tx (10 watt transmitter)  
Ni-MH rechargeable battery packs and chargers



For more information contact:

#### Vivax-Metrotech Corporation

3251 Olcott Street, Santa Clara, CA 95054, USA  
T/Free: 800-446-3392 Tel: +1-408-734-1400  
Fax: +1-408-734-1415 Email: sales@vxmt.com

#### Vivax Canada Inc.

41 Courtland Ave Unit 6, Vaughan, ON L4K 3T3, Canada  
Tel: +1-289-846-3010 Fax: +1-905-752-0214  
Email: CanadianSales@vxmt.com

#### Vivax-Metrotech Ltd.

14-15, Bishops Court Gardens, Bishops Court Lane,  
Clyst St. Mary, Exeter, Devon, EX5 1DH, UK  
Tel: +44(0)1392-368833  
Email: salesUK@vxmt.com

